



- Lamp: Flashing beacon – XENON (5 J)/continuous beacon – LED
- Type of protection: Ex d
- Class: IP66/IP67 (IEC 60529/NEMA 4X)
- Corrosion-resistant GRP enclosure
- Stainless steel protection cage included
- 8 light-intensifying Fresnel lens colours available to order
- Low weight (2.25 kg)

E5

WebCode **FX15A**



**Product series FX15** provides visual signals from a continuous beacon with an LED or a 5 J lashing beacon with xenon flashes. The enclosure is made of glass fibre reinforced polyester. The product series is intended for use in hazardous areas and harsh environments.

	IECEX / ATEX					
Zone	0	1	2	20	21	22
Installation in		•	•		•	•

Selection Table				
Lamp	LED			
Rated operational voltage AC	100 – 254 V			
Lens colour	Product Type	Art. No.	Weight	kg
Amber	FX15/C-P-060-A-EN-SF-A-ST-00-00-00	247077	2.250	
Blue	FX15/C-P-060-B-EN-SF-A-ST-00-00-00	247069	2.250	
Clear	FX15/C-P-060-C-EN-SF-A-ST-00-00-00	247085	2.250	
Green	FX15/C-P-060-G-EN-SF-A-ST-00-00-00	247061	2.250	
Red	FX15/C-P-060-R-EN-SF-A-ST-00-00-00	247093	2.250	
Lamp	LED			
Rated operational voltage DC	24 V			
Lens colour	Product Type	Art. No.	Weight	kg
Amber	FX15/C-D-060-A-EN-SF-A-ST-00-00-00	247078	2.230	
Blue	FX15/C-D-060-B-EN-SF-A-ST-00-00-00	247070	2.230	
Clear	FX15/C-D-060-C-EN-SF-A-ST-00-00-00	247086	2.230	
Green	FX15/C-D-060-G-EN-SF-A-ST-00-00-00	247062	2.230	
Magenta	FX15/C-D-060-M-EN-SF-A-ST-00-00-00	251767	2.230	
Red	FX15/C-D-060-R-EN-SF-A-ST-00-00-00	247094	2.230	
Lamp	Xenon flash tubes			
Rated operational voltage AC	115 V			
Lens colour	Product Type	Art. No.	Weight	kg
Amber	FX15/C-L-050-A-EN-SF-A-ST-00-00-00	217981	2.250	
Clear	FX15/C-L-050-C-EN-SF-A-ST-00-00-00	217983	2.250	

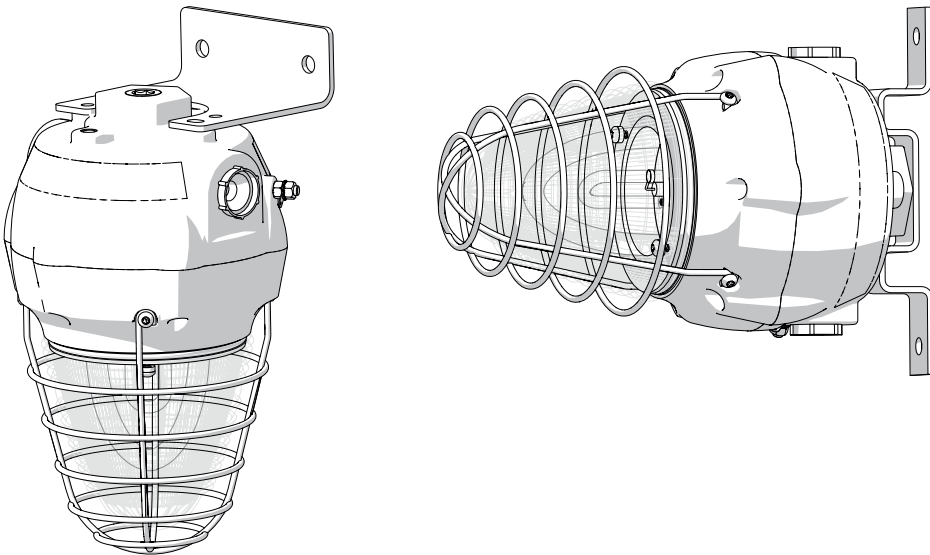
Selection Table				
Lamp Rated operational voltage AC	Xenon flash tubes 115 V			
Lens colour	Product Type	Art. No.	Weight kg	
Green	FX15/C-L-050-G-EN-SF-A-ST-00-00-00	217993	2.250	
Red	FX15/C-L-050-R-EN-SF-A-ST-00-00-00	217973	2.250	
Lamp Rated operational voltage AC	Xenon flash tubes 230 V			
Lens colour	Product Type	Art. No.	Weight kg	
Amber	FX15/C-N-050-A-EN-SF-A-ST-00-00-00	217982	2.250	
	FX15/C-N-050-A-RU-SF-A-ST-00-00-00	250498	2.250	
Blue	FX15/C-N-050-B-EN-SF-A-ST-00-00-00	218002	2.250	
Clear	FX15/C-N-050-C-EN-SF-A-ST-00-00-00	217995	2.250	
Green	FX15/C-N-050-G-EN-SF-A-ST-00-00-00	218003	2.250	
	FX15/C-N-050-G-RU-SF-A-ST-00-00-00	257179	2.250	
Red	FX15/C-N-050-R-EN-SF-A-ST-00-00-00	217974	2.250	
	FX15/C-N-050-R-RU-SF-A-ST-00-00-00	238878	2.250	
Yellow	FX15/C-N-050-Y-EN-SF-A-ST-00-00-00	218001	2.250	
	FX15/C-N-050-Y-RU-SF-A-ST-00-00-00	250499	2.250	
Lamp Rated operational voltage DC	Xenon flash tubes 24 V			
Lens colour	Product Type	Art. No.	Weight kg	
Amber	FX15/C-D-050-A-EN-SF-A-ST-00-00-00	217979	2.230	
	FX15/C-D-050-A-RU-SF-A-ST-00-00-00	239122	2.230	
Blue	FX15/C-D-050-B-EN-SF-A-ST-00-00-00	217992	2.230	
Clear	FX15/C-D-050-C-EN-SF-A-ST-00-00-00	217989	2.230	
Green	FX15/C-D-050-G-EN-SF-A-ST-00-00-00	217997	2.230	
Red	FX15/C-D-050-R-EN-SF-A-ST-00-00-00	217971	2.230	
	FX15/C-D-050-R-RU-SF-A-ST-00-00-00	239121	2.230	
Yellow	FX15/C-D-050-Y-EN-SF-A-ST-00-00-00	217991	2.230	
	FX15/C-D-050-Y-RU-SF-A-ST-00-00-00	252025	2.230	

Technical Data				
Variant	24 V	115 V	230 V	FX15/C-D-060-A-EN-SF-A-ST-00-00-00Strobe
Explosion Protection				
Ambient temperature °C	-60 ... +40 °C	-60 ... +40 °C	-60 ... +40 °C	-60 ... +70 °C
IECEX gas explosion protection	Ex d IIC T6/T5/T4 Gb	Ex d IIC T5/T4 Gb	Ex d IIC T6/T5/T4 Gb	Ex d IIC T6 Gb
IECEX dust explosion protection	Ex tb IIIC T73 °C ... T88 °C ... T103 °C Db	Ex tb IIIC T83 °C ... T113 °C Db	Ex tb IIIC T75 °C ... T90 °C ... T105 °C Db	Ex tb IIIC T85 °C Db
ATEX gas explosion protection	Ⓜ II 2 G Ex d IIC T6/T5/T4 Gb	Ⓜ II 2 G Ex d IIC T5/T4 Gb	Ⓜ II 2 G Ex d IIC T6/T5/T4 Gb	Ⓜ II 2 G Ex d IIC T6 Gb
ATEX dust explosion protection	Ⓜ II 2 D Ex tb IIIC T73 °C ... T88 °C ... T103 °C Db	Ⓜ II 2 D Ex tb IIIC T83 °C ... T113 °C Db	Ⓜ II 2 D Ex tb IIIC T75 °C ... T90 °C ... T105 °C Db	Ⓜ II 2 D Ex tb IIIC T85 °C Db
Certificates	ATEX (BAS), Brazil (ULB), China (CQST), IECEX (BAS), India (PESO)	ATEX (BAS), Brazil (ULB), China (CQST), IECEX (BAS), India (PESO)	ATEX (BAS), Brazil (ULB), China (CQST), IECEX (BAS), India (PESO)	ATEX (BAS), Brazil (ULB), China (CQST), IECEX (BAS), India (PESO)
Electrical Data				
Tolerance	-10 – 10 %	-10 – 10 %	-10 – 10 %	-10 – 10 %




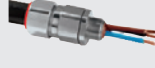
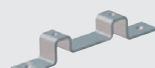

Technical Data				
Variant	24 V	115 V	230 V	FX15/C-D-060-A-EN-SF-A-ST-00-00-00Strobe
<b>Ambient Conditions</b>				
Operating temperature	-50 °C ... +70 °C	-55 °C ... +55 °C	-55 °C ... +70 °C	-60 °C ... +50 °C
<b>Mechanical Data</b>				
Degree of protection IP (IEC 60529)	IP66/IP67	IP66/IP67	IP66/IP67	IP66/IP67
Enclosure material	Polyester (GRP), Glass fibre reinforced	Polyester (GRP), Glass fibre reinforced	Polyester (GRP), Glass fibre reinforced	Polyester (GRP), Glass fibre reinforced
Enclosure colour	Black	Black	Black	Black
Seal	O-ring seal	O-ring seal	O-ring seal	O-ring seal
Sealing material	Red silicone 70	Red silicone 70	Red silicone 70	Red silicone 70
Material dome	Polycarbonate, prismatic	Polycarbonate, prismatic	Polycarbonate, prismatic	Polycarbonate, prismatic
Material wire guard	Stainless steel	Stainless steel	Stainless steel	Stainless steel
Connection terminals solid max.	2.5 mm <sup>2</sup>	2.5 mm <sup>2</sup>	2.5 mm <sup>2</sup>	2.5 mm <sup>2</sup>
Connection terminals finely-stranded max.	2.5 mm <sup>2</sup>	2.5 mm <sup>2</sup>	2.5 mm <sup>2</sup>	2.5 mm <sup>2</sup>
<b>Mounting / Installation</b>				
Material mounting parts	Stainless steel	Stainless steel	Stainless steel	Stainless steel
Connection type	Screw terminal	Screw terminal	Screw terminal	Screw terminal
<b>Components</b>				
Drilled holes	3 x M20	3 x M20	3 x M20	3 x M20
Cable entries	Can be ordered as accessories	Can be ordered as accessories	Can be ordered as accessories	Can be ordered as accessories
Stopping plug	3 x dust cap	3 x dust cap	3 x dust cap	3 x dust cap

You can find more technical data online at [r-stahl.com](http://r-stahl.com). WebCode FX15A

**Technical Drawings – Subject to Alterations**



**Accessories**

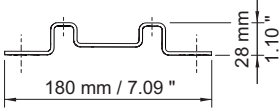
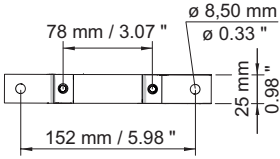
Figure	Description	Art. No.	Weight kg
<b>Cable glands made of metal</b>			
	Ex d & Ex e Compound barrier cable gland for all types of unarmoured and braid armour cables (nickel plated brass)	109441 ▲	0.200
	Ex d & Ex e cable gland for all types of armoured cables (SWA, braided, tape) (nickel plated brass) with unique compensating displacement seal system (CDS)	246561 ▲	0.280
	Ex d & Ex e cable gland for all types of unarmoured and braid armour cables (nickel plated brass)	243464 ▲	0.070
	Ex d & Ex e Compound barrier cable gland for all types of armoured cables (SWA, braided, tape) (nickel plated brass)	109428 ▲	0.240
<b>Mounting accessories</b>			
	Fastening bracket, stainless steel (available for FX15)	221712 ▲	0.155
	Stainless steel L-bracket; standard — see dimensional drawings	221711 ▲	0.287

**Spare Parts**

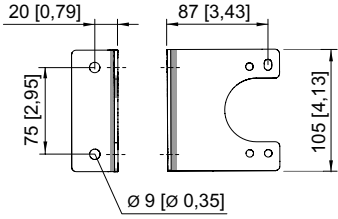
Figure	Description	Art. No.	Weight kg
<b>Flange</b>			
	Flange, ATEX, amber (available for FL6S, FX15, YL6S)	243407	1.190
	Flange, ATEX, blue (available for FL6S, FX15, YL6S)	243406	1.190
	Flange, ATEX, clear (available for FL6S, FX15, YL6S)	223578	1.190
	Flange, ATEX, green (available for FL6S, FX15, YL6S)	243405	1.190
	Flange, ATEX, red (available for FL6S, FX15, YL6S)	243408	1.190
	Flange, ATEX, yellow (available for FL6S, FX15, YL6S)	243409	1.190
<b>Lamp</b>			
	Xenon lamp (available for FL6S, FX15, YL6S)	223636	0.006
<b>PCB</b>			
	Electronic PCB, 115 V AC, 5 J (available for FL6S, FX15, YL6S)	223632	0.118
	Electronic PCB, 230 V AC, 5 J (available for FL6S, FX15, YL6S)	223580	0.100
	Electronic PCB, 24 V DC, 5 J (available for FL6S, FX15, YL6S)	223635	0.080
	Connection PCB (available for FL6S, FX15, YL6S)	223579	0.020

FX15 Beacons are supplied without a bracket. These must be ordered separately (see accessories table).

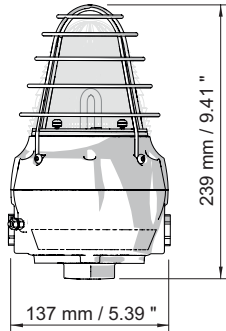
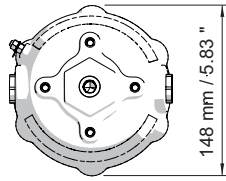
Dimensional Drawings (All Dimensions in mm [inches]) – Subject to Alterations



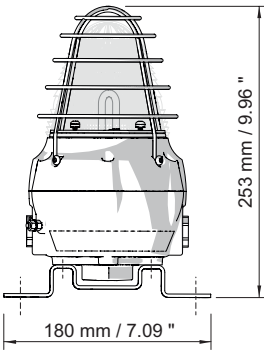
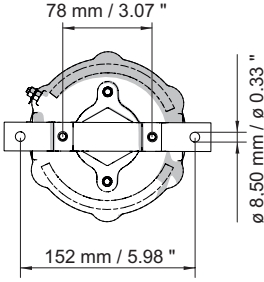
Backstrap bracket



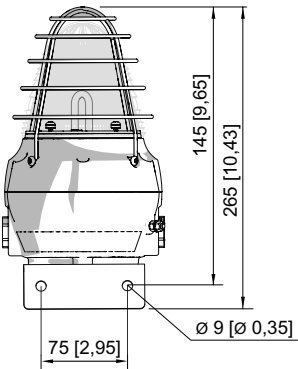
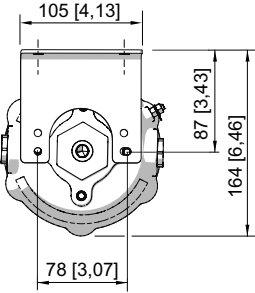
L-shaped bracket



FX15 Beacon



FX15 Beacon with backstrap bracket



FX15 Beacon with L-bracket