



- Resistant Ex e enclosure, universally usable as connection or junction boxes and/or to safeguard electric distributors up to 6.3 A
- Degree of protection IP66
- With mantle terminals or with a combination of mantle terminals and miniature fuses (optional)

E3

WebCode **8118A**



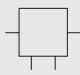
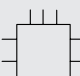
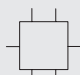
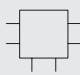
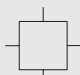
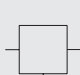

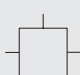
R. STAHL Series 8118 Ex e junction boxes are equipped with 4, 5 or 8 mantle terminals depending on their design size. As an option, miniature fuses can still be installed in addition. Junction boxes are also suitable for safeguarding. The robust enclosure made from glass fibre-reinforced polyester resin can be equipped with plastic or metal cable glands.

	IECEX / ATEX					
Zone	0	1	2	20	21	22
Installation in		•	•		•	•

Selection Table					
Product Description Ambient temperature °C		Ex e junction box -60 ... +40 °C			
Figure	Product Type	Rated operational voltage AC	Cable glands	Terminal	Art. No.
	8118/121-899-C1028	750 V	6 x Threaded holes M25 x 1,5	8 x Sheath terminal 6 mm <sup>2</sup>	133175
	8118/121-804-2	750 V	3 x Polyamide stopping plug M25 x 1,5	8 x Sheath terminal 6 mm <sup>2</sup>	202991
	8118/121-800	750 V	-	8 x Sheath terminal 6 mm <sup>2</sup>	133220
	8118/121-638-C1917	690 V	2 x Polyamide cable gland M25 x 1,5 7 - 17 mm 2 x Polyamide cable gland M25 x 1,5 7 - 17 mm	6 x Sheath terminal 6 mm <sup>2</sup>	253858

**Selection Table**

Product Description Ambient temperature °C		Ex e junction box -40 ... +40 °C			
Figure	Product Type	Rated operational voltage AC	Cable glands	Terminal	Art. No.
	8118/111-503	550 V	3 x Polyamide cable gland M20 x 1,5 4 – 13 mm 1 x Polyamide stopping plug M25 x 1,5	5 x Sheath terminal 4 mm <sup>2</sup>	133248 ▲
	8118/111-503-C1629	550 V	2 x Polyamide cable gland M20 x 1,5 4 – 13 mm 2 x Polyamide stopping plug M20 x 1,5	5 x Sheath terminal 4 mm <sup>2</sup>	223876
	8118/111-401	550 V	2 x Polyamide cable gland M20 x 1,5 4 – 13 mm 1 x Polyamide stopping plug M20 x 1,5	4 x Sheath terminal 4 mm <sup>2</sup>	133077 ▲
	8118/121-899-C1046	750 V	5 x Polyamide cable gland M25 x 1,5 7 – 17 mm	8 x Sheath terminal 6 mm <sup>2</sup>	133179
	8118/121-899-C1585	690 V	2 x Polyamide cable gland M16 x 1,5 2 – 9 mm 2 x Polyamide cable gland M25 x 1,5 7 – 17 mm	8 x Sheath terminal 6 mm <sup>2</sup>	218006
	8118/121-807	750 V	4 x Polyamide cable gland M25 x 1,5 7 – 17 mm 2 x Polyamide stopping plug M25 x 1,5	8 x Sheath terminal 6 mm <sup>2</sup>	133126 ▲
	8118/121-806	750 V	4 x Polyamide cable gland M20 x 1,5 4 – 13 mm 2 x Polyamide stopping plug M20 x 1,5	8 x Sheath terminal 6 mm <sup>2</sup>	133120 ▲
	8118/121-805	750 V	3 x Polyamide cable gland M25 x 1,5 7 – 17 mm 1 x Polyamide stopping plug M25 x 1,5	8 x Sheath terminal 6 mm <sup>2</sup>	133114 ▲
	8118/121-539	750 V	2 x Polyamide cable gland M25 x 1,5 7 – 17 mm	5 x Sheath terminal 6 mm <sup>2</sup>	133253
	8118/121-538	750 V	4 x Polyamide cable gland M25 x 1,5 7 – 17 mm	5 x Sheath terminal 6 mm <sup>2</sup>	133252 ▲
	8118/121-538-C1139	750 V	4 x Polyamide cable gland M25 x 1,5 7 – 17 mm 2 x Polyamide stopping plug M25 x 1,5	5 x Sheath terminal 6 mm <sup>2</sup>	133190
	8118/121-507-C1140	750 V	6 x Polyamide cable gland M25 x 1,5 7 – 17 mm 2 x Polyamide stopping plug M25 x 1,5	5 x Sheath terminal 6 mm <sup>2</sup>	133191

Selection Table					
Product Description Ambient temperature °C		Ex e junction box -40 ... +40 °C			
Figure	Product Type	Rated operational voltage AC	Cable glands	Terminal	Art. No.
	8118/131-899-C1036	750 V	4 x Polyamide cable gland M32 x 1,5 9 – 21 mm	8 x Sheath terminal 10 mm <sup>2</sup>	133178
	8118/131-814	750 V	6 x Polyamide cable gland M25 x 1,5 7 – 17 mm 4 x Polyamide stopping plug M25 x 1,5	8 x Sheath terminal 10 mm <sup>2</sup>	133210 ▲
	8118/131-811	750 V	4 x Polyamide cable gland M32 x 1,5 9 – 21 mm 2 x Polyamide stopping plug M32 x 1,5	8 x Sheath terminal 10 mm <sup>2</sup>	133186 ▲
Product Description Ambient temperature °C		Ex e junction box -20 ... +40 °C			
Figure	Product Type	Rated operational voltage AC	Cable glands	Terminal	Art. No.
	8118/121-848-C1814	690 V	6 x Threaded holes M20 x 1,5	8 x Sheath terminal 6 mm <sup>2</sup>	249589
Product Description Ambient temperature °C		Ex i junction box -40 ... +75 °C			
Figure	Product Type	Rated operational voltage AC	Cable glands	Terminal	Art. No.
	8118/211-403	60 V	3 x Polyamide cable gland M25 x 1,5 7 – 17 mm 1 x Polyamide stopping plug (Provided separately) M25 x 1,5	4 x Sheath terminal 4 mm <sup>2</sup>	133104 ▲
	8118/211-401	60 V	2 x Polyamide cable gland M20 x 1,5 4 – 13 mm 1 x Polyamide stopping plug (Provided separately) M20 x 1,5	4 x Sheath terminal 4 mm <sup>2</sup>	133084 ▲
Product Description Ambient temperature °C		Ex i junction box -20 ... +75 °C			
Figure	Product Type	Rated operational voltage AC	Cable glands	Terminal	Art. No.
	8118/221-899	60 V	–	8 x Sheath terminal 6 mm <sup>2</sup>	133219
Product Description Rated operational current Ambient temperature °C		Junction box With fuses 2 A (T6) 6.3 A (T4) -40 ... +40 °C			
Figure	Product Type	Rated operational voltage AC	Cable glands	Terminal	Art. No.
	8118/113-303	250 V / 500 V	2 x 2 x	3 x Sheath terminal 4 mm <sup>2</sup>	133078

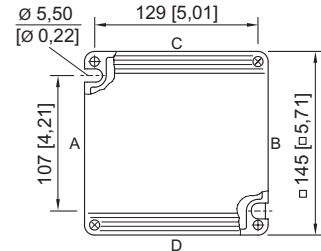
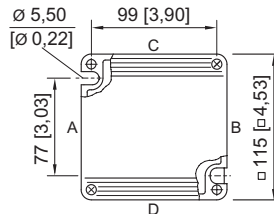
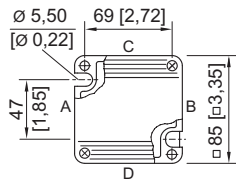
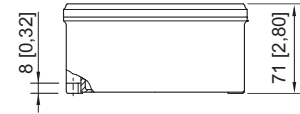
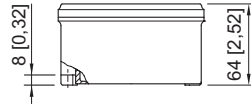
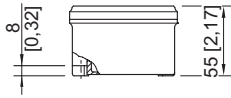
Junction boxes with integral equipment fuse on request

Technical Data			
Variant	Ex e junction box	Ex i junction box	Junction box With fuses
Explosion Protection			
IECEX gas explosion protection	Ex eb IIC T6/T5 Gb	Ex ia ib IIC T6 Gb	Ex e mb IIC T6/T4 Gb
ATEX gas explosion protection	Ⓔ II 2 G Ex eb IIC T6/T5 Gb	Ⓔ II 2 G Ex ia ib IIC T6 Gb	Ⓔ II 2 G Ex e mb IIC T6/T4 Gb
EAC gas explosion protection			Ⓔ 1 Ex e d ia mb IIC T6...T3 Gb X
IECEX dust explosion protection	Ex tb IIIC T80 °C ... T95 °C ... T130 °C Db	Ex tb IIIC T80 °C Db	Ex tb IIIC T80 °C ... T130 °C Db
ATEX dust explosion protection	Ⓔ II 2 D Ex tb IIIC T80 °C ... T95 °C ... T130 °C Db	Ⓔ II 2 D Ex tb IIIC T80 °C Db	Ⓔ II 2 D Ex tb IIIC T80 °C ... T130 °C Db
EAC dust explosion protection			Ⓔ Ex tb IIIC T80° ... T135°C DbX
Certificates	ATEX (PTB), Brazil (ULB), China (NEPSI), EAC (LPE), IECEX (PTB)	ATEX (PTB), Brazil (ULB), China (NEPSI), EAC (LPE), IECEX (PTB)	ATEX (PTB), Brazil (ULB), China (NEPSI), EAC (LPE), IECEX (PTB)
Notes	CCC certificate available from 2021 onward	CCC certificate available from 2021 onward	CCC certificate available from 2021 onward
Ship approval	BVIS	BVIS	BVIS
Notes	Product label may vary. Series devices have certification according to ATEX and IECEX.		
Mechanical Data			
Degree of protection (IP)			IP66
Enclosure material	Polyester resin, Glass fibre reinforced	Polyester resin, Glass fibre reinforced	Polyester resin, Glass fibre reinforced

Accessories			
Figure	Description	Art. No.	Weight kg
Brass plate with thread			
	for cable glands 1 x M20 x 1.5 for earth continuity when using metal glands	133208	0.030
	can be installed into: enclosure size 1 side C / D enclosure size 2 side C / D enclosure size 3 side C / D		
	for cable glands 2 x M20 x 1.5 / 1 x M25 x 1.5 / 1 x M32 x 1.5 for earth continuity when using metal glands threads are cut acc. to order	133182	0.060
	can be installed into: enclosure size 2 side C / D enclosure size 3 side C / D		
	for cable glands 2 x M25 x 1.5 for earth continuity when using metal glands	133198	0.080
can be installed into: enclosure size 2 side C / D enclosure size 3 side C / D			
for cable glands 2 x M32 x 1.5 for earth continuity when using metal glands	133202	0.140	
can be installed into: enclosure size 3 side C / D			

Dimensional Drawings (All Dimensions in mm [inches]) – Subject to Alterations

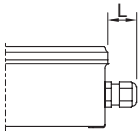
E3



8118/1.  
enclosure size 1

8118/2.  
enclosure size 2

8118/3.  
enclosure size 3



Length L  
 protrusion length for cable glands, Series 8161  
 in case of M20: 25 ... 31 [0,98 ... 1,22]  
 in case of M25: 27 ... 33 [1,06 ... 1,3]  
 in case of M32: 32 ... 39 [1,26 ... 1,54]  
 protrusion length for cable glands with strain relief,  
 Series HSK-K-MZ  
 in case of M25: 41 [1,61]