

Flush type flanged diaphragm seal model DF ASME

according to ASME B16.5



FEATURES

- *All-welded design*
- *Variety of wetted parts materials, special materials cover the sealing surface too*
- *Filling port in the instrument connection*
- *Suitable for pressure gauges, switches and transmitters*
- *Continuous duty design*
- *Minimized fill volume*

APPLICATIONS

- *Corrosive processes*
- *Controlling fugitive emissions*
- *Elevated process temperatures*
- *Suspended solids in the process*
- *Limited space*
- *Where flush connections are preferred*

CONSTRUCTION

The DF Type allows a flush installation on pipe, tank or vessel applications. All of the combinations afford instrument protection from corrosives, heat and clogging issues associated with viscous media or solids.

SPECIFICATIONS

Maximum Pressure Rating

150 lbs, 300 lbs, 600 lbs, 900 lbs, 1500 lbs, 2500 lbs, others on request

Flange Material

Stainless Steel 1.4404 (316L)

Diaphragm Materials

Stainless Steel 1.4435 (316L), Hastelloy C-276, Tantalum, Monel 400, PTFE (Teflon) or ECTFA (Halar) coating or Gold plating, others on request

Instrument Connection Material

Stainless Steel 1.4404 (316L)

Instrument Connection Sizes

G ¼, G ½ female, ¼ NPT, ½ NPT female, Port for direct welded instruments or capillary line

Process Connections

1", 1 ½", 2", 3", 4" according to ASME B16.5 Form RF or RTJ, others on request

Accuracy (typical)

Seal will add 0,5 % to the stated full scale accuracy of the instrument attached.

Standard Fill Medias

Silicone
Halocarbon
Syltherm
FDA approved white oil, silicone free
*Others available upon request

ATEX

Conformity according to RL 2014/34/EU appendix X for mechanical equipment in potential hazardous areas:

Optional, marking

CE 0044 Ex II 2 GD c II TX

File no. 35101282 at notified body 0044, TÜV NORD CERT

The temperature class will be determined by the used measuring device.

OPTIONS

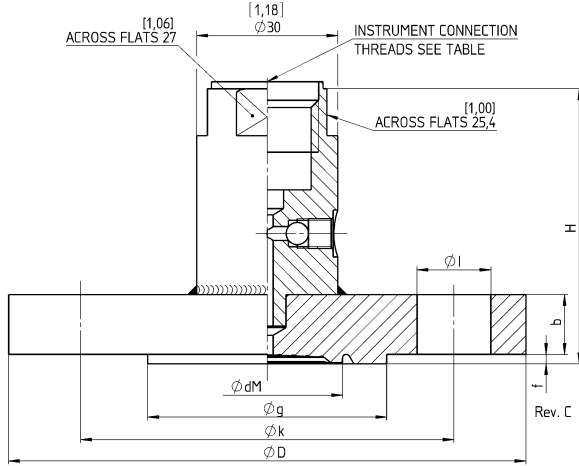
- DU - Welded instrument connection
- MQ - PMI-test
- 6B - Cleaned for Oxygen service
- C3 - Material certificate EN 10204 3.1
- CD5 - NACE certificate

ACCESSORIES

Flushing ring, capillary line, cooling tower

General dimensions [mm]

INSTRUMENT CONN. THREADS	CODE
1/4-18 NPT FEMALE	02T
1/2-14 NPT FEMALE	04T
G 1/2 FEMALE, DIN EN 837	51T
G 1/4 FEMALE, DIN EN 837	26T
WELDING PORT	00T



Size DN	PRESSURE CLASSES	φD	b	φg	φdM	f	φk	φl	H	MIN SPAN	WEIGHT KG
1"	150	[4,33] 110	[0,50] 12,7	[2,00] 50,8	[1,26] 32	[0,08] 2	[3,13] 79,4	[0,63] 15,9 x 4	[2,29] 58,2	6 bar	1,0
	300	[4,92] 125	[0,63] 15,9				[3,50] 88,9	[0,75] 19,1 x 4	[2,42] 61,4		1,5
	400/600	[5,91] 150	[0,69] 17,5				[4,00] 101,6	[1,00] 25,4 x 4	[2,68] 68,0		2,0
	900/1500	[6,30] 160	[1,38] 35,0				[4,25] 108,0	[1,00] 25,4 x 4	[3,37] 85,5		4,0
	2500	[4,92] 125	[0,63] 15,9				[3,87] 98,4	[0,63] 15,9 x 4	[2,42] 61,4		5,0
1 1/2"	150	[6,10] 155	[0,75] 19,1	[2,87] 73,0	[1,73] 44	[0,08] 2	[4,50] 114,3	[0,87] 22,2 x 4	[2,54] 64,6	4 bar	2,0
	300	[7,09] 180	[1,25] 31,8				[4,87] 123,8	[1,13] 28,6 x 4	[3,24] 82,3		3,0
	400/600	[8,07] 205	[1,75] 44,5				[5,75] 146,0	[1,25] 31,8 x 4	[3,74] 95,0		6,0
	900/1500	[5,91] 150	[0,69] 17,5				[4,75] 120,7	[0,75] 19,1 x 4	[2,48] 63,0		10,5
	2500	[5,91] 150	[0,81] 20,7				[5,00] 127,0	[0,75] 19,1 x 8	[2,62] 66,5		2,5
2"	150	[8,46] 215	[1,50] 38,1	[3,63] 92,1	[2,24] 57	[0,08] 2	[6,50] 165,1	[1,00] 25,4 x 8	[3,49] 88,6	1 bar	3,5
	300	[9,25] 235	[2,00] 50,9				[6,75] 171,4	[1,13] 28,6 x 8	[3,99] 101,4		4,5
	400/600	[10,43] 265	[1,88] 47,7				[7,50] 190,5	[1,25] 31,8 x 8	[4,61] 117,2		10,5
	900/1500	[7,48] 190	[0,88] 22,3				[7,50] 190,5	[0,75] 19,1 x 4	[2,67] 67,8		16,0
	2500	[7,48] 190	[1,06] 27,0				[6,63] 168,3	[0,87] 22,2 x 8	[2,85] 72,5		5,5
3"	150	[8,27] 210	[1,25] 31,8	[5,00] 127,0	[3,46] 88	[0,08] 2	[7,50] 190,5	[1,00] 25,4 x 8	[3,49] 88,6	1 bar	7,0
	300	[9,45] 240	[1,50] 38,1				[8,00] 203,2	[1,25] 31,8 x 8	[3,88] 98,5		9,0
	400/600	[10,43] 265	[1,88] 47,7				[9,00] 228,6	[1,37] 34,9 x 8	[4,61] 117,2		13,5
	900/1500	[11,42] 290	[1,75] 44,5				[9,50] 241,3	[1,37] 34,9 x 8	[4,11] 104,5		19,5
	2500	[12,20] 310	[2,13] 54,0				[10,75] 273,0	[1,63] 41,3 x 8	[4,99] 126,7		35,0
4"	150	[13,98] 355	[3,00] 76,2	[6,19] 157,2	[3,46] 88	[0,08] 2	[7,87] 200,0	[0,87] 22,2 x 8	[2,98] 75,7	1 bar	7,5
	300	[10,04] 255	[1,38] 35,0				[8,50] 215,9	[1,00] 25,4 x 8	[3,37] 85,5		12,0
	400/600	[10,83] 275	[1,50] 38,1				[9,25] 235,0	[1,25] 31,8 x 8	[3,74] 95,0		14,0
	900/1500	[11,42] 290	[1,75] 44,5				[10,50] 266,7	[1,37] 34,9 x 8	[4,11] 104,5		17,5
	2500	[12,20] 310	[2,13] 54,0				[11,75] 296,7	[1,63] 41,3 x 8	[4,99] 126,7		27,5

Order information

Process connection	Diaphragm material	Flange material	Instrument connection	Rating	Flange form	Filling fluid	Options
Nominal Diameter	(S) 316L (1.4435)	(S) 316L (1.4404)	(00T) Welding port	Nominal pressure in lbs.	(RF) Raised face	(CK) Silicone (direct mounted or with capillary ≤ 10' (3 m), -40/600 °F, -40/315 °C)	(6B) Cleaned for Oxygen service (Halocarbon filling required)
(10) 1"	(P) Monel 400		(02T) 1/4 NPT female	(150 LBS)	(RTJ) Ring joint face (not for Tantalum diaphragm)	(DJ) Silicone (with capillary > 10' (3 m), -40/600 °F, -40/315 °C)	(ATEX) ATEX approval
(15) 1 1/2"	(U) Tantalum max. temp. 480 °F, 250 °C		(04T) 1/2 NPT female	(300 LBS)		(CF) Halocarbon (direct mounted or with capillary, -70/300 °F, -56/149 °C)	(DU) Welded instrument connection
(20) 2"	(H) Hastelloy C276		(51T) G 1/2 female	(600 LBS)		(HA) Syltherm 800 (direct mounted or with capillary, -40/750 °F, -40/400 °C)	(NH) Tagging wired
(30) 3"	(S-H) 316L (1.4435) Halar coated (ECTFE) Max. temp. 300 °F, 150 °C		(26T) G 1/4 female	(900 LBS)		(GQ) FDA approved white oil, silicone free (direct mounted or with capillary ≤ 10' (3 m), 15/480 °F, -10/250 °C)	Material certificates according EN 10 204
(40) 4"	(S-TC) 316L (1.4435) Teflon coated (PTFE) Max. temp. 300 °F, 150 °C			(1500 LBS)			(C3) 3.1 traceability
	(W) 316L (1.4435) Gold plated			(2500 LBS)			(CD5) NACE certificate MR 01-75/ ISO 15156
others on request	others on request	others on request	others on request	others on request	others on request	others on request	(MQ) PMI test
							(1115A) Stainless steel armored capillary ¹⁾
							(1115P) Stainless steel armored capillary with PVC sheathing ¹⁾
							¹⁾ see data sheet G3.1115

Order example

Process connection	Type	Diaphragm material	Flange material	Instrument connection	Rating	Flange form	Filling fluid	Option
20	DF ASME	H	S	04T	300 LBS	RF	CK	C3

Ashcroft Instruments GmbH

Germany
Max-Planck-Str. 1,
D-52499 Baesweiler
P.O. Box 11 20, D-52490 Baesweiler
Tel.: +49 (0) 2401 808-0

France
„206“ ZA du Mandinet, 1/3 Rue des Campanules,
F-77185 Lognes
Tel.: +33 (0) 1 60 37 25 30

Website: www.ashcroft.eu
Ashcroft Instruments Ltd.
Unit 17 & 18 William James House
Cowley Road,
Cambridge CB4 0WX
Tel.: +44 (0) 12 23 39 55 00

e-Mail: sales@ashcroft.com
Ashcroft ISTANBUL
Gayrettepe Mah. Yildiz Posta Cad.
Yildiz Residence No:24 K:1 D:4
34349 Besiktas -Istanbul
Tel.: +90 (0)212 3270847