



- Wide range of Ex e terminal boxes in various sizes and materials, degree of protection IP66
- Customised equipping in accordance with customer specifications
- Enclosures with captive cover screws, if required, flange on enclosure sides is possible

E3

WebCode **8146A**



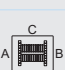



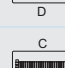







R. STAHL Series 8146 terminal boxes, made of high-quality, glass fibre-reinforced polyester resin, are ideal for use in harsh operating conditions. With eight basic sizes in various heights, they are universally usable. If requested by the customer, they are equipped with series terminals up to 300 mm<sup>2</sup> and, as an option, a flange on several enclosure sides is possible.

	IECEX / ATEX					
Zone	0	1	2	20	21	22
Installation in		•	•		•	•

Selection Table								
Product Description		Ex e terminal box						
Figure	Product Type	Terminal	Terminal rail	Earth rail	Max. no. of terminals 2.5 mm <sup>2</sup>	Max. no. of terminals 4 mm <sup>2</sup>	Art. No.	Weight kg
	8146/1S71	1 x Phoenix MBK 2-conductor, 2.5 mm <sup>2</sup> , grey	15 x 301 mm (2x)	7 x 4 mm <sup>2</sup> (1x)	–	98	136742	2.010
	8146/1S71	1 x Phoenix UT 2-conductor, 2.5 mm <sup>2</sup> , grey	35 x 301 mm (1x)	7 x 4 mm <sup>2</sup> (1x)	49	–	136738 ▲	2.010
		1 x Phoenix UT 2-conductor, 4 mm <sup>2</sup> , grey	35 x 301 mm (1x)	7 x 4 mm <sup>2</sup> (1x)	–	41	136740	2.000
	8146/1031	1 x Phoenix UT 2-conductor, 2.5 mm <sup>2</sup> , grey 2 x Phoenix UT 2-conductor, 2.5 mm <sup>2</sup> , green- yellow	35 x 90 mm (1x)	–	6	–	136603 ▲	0.640
	8146/1041	1 x Phoenix UT 2-conductor, 2.5 mm <sup>2</sup> , grey 2 x Phoenix UT 2-conductor, 2.5 mm <sup>2</sup> , green- yellow	35 x 133 mm (1x)	–	19	–	136665 ▲	0.730
		1 x Phoenix UT 2-conductor, 4 mm <sup>2</sup> , grey 2 x Phoenix UT 2-conductor, 4 mm <sup>2</sup> , green-yellow	35 x 133 mm (1x)	–	–	16	136667	1.000

**Selection Table**

Product Description		Ex e terminal box						
Figure	Product Type	Terminal	Terminal rail	Earth rail	Max. no. of terminals 2.5 mm <sup>2</sup>	Max. no. of terminals 4 mm <sup>2</sup>	Art. No.	Weight kg
	8146/1051	1 x Phoenix MBK 2-conductor, 2.5 mm <sup>2</sup> , grey	15 x 133 mm (2x)	7 x 4 mm <sup>2</sup> (1x)	–	32	136692	1.070
	8146/1051	1 x Phoenix UT 2-conductor, 2.5 mm <sup>2</sup> , grey	35 x 133 mm (1x)	7 x 4 mm <sup>2</sup> (1x)	19	–	136688 ▲	1.060
		1 x Phoenix UT 2-conductor, 4 mm <sup>2</sup> , grey	35 x 133 mm (1x)	7 x 4 mm <sup>2</sup> (1x)	–	16	136690	1.000
	8146/1061	1 x Phoenix MBK 2-conductor, 2.5 mm <sup>2</sup> , grey	15 x 189 mm (2x)	7 x 4 mm <sup>2</sup> (1x)	–	54	136718	1.460
	8146/1061	1 x Phoenix UT 2-conductor, 2.5 mm <sup>2</sup> , grey	35 x 189 mm (1x)	7 x 4 mm <sup>2</sup> (1x)	27	–	136714 ▲	1.400
		1 x Phoenix UT 2-conductor, 4 mm <sup>2</sup> , grey	35 x 189 mm (1x)	7 x 4 mm <sup>2</sup> (1x)	–	23	136716	1.350
	8146/1081	1 x Phoenix UT 2-conductor, 2.5 mm <sup>2</sup> , grey	35 x 301 mm (1x)	18 x 4 mm <sup>2</sup> (1x)	52	–	136800	3.400
	8146/1081	1 x Phoenix UT 2-conductor, 2.5 mm <sup>2</sup> , grey	35 x 301 mm (2x)	18 x 4 mm <sup>2</sup> (1x)	98	–	136804	3.810
	8146/1081	1 x Phoenix UT 2-conductor, 2.5 mm <sup>2</sup> , grey	35 x 301 mm (3x)	18 x 4 mm <sup>2</sup> (1x)	147	–	136808	4.200
	8146/1081	1 x Phoenix UT 2-conductor, 4 mm <sup>2</sup> , grey	35 x 301 mm (1x)	18 x 4 mm <sup>2</sup> (1x)	–	43	136802	3.370
	8146/1081	1 x Phoenix UT 2-conductor, 4 mm <sup>2</sup> , grey	35 x 301 mm (2x)	18 x 4 mm <sup>2</sup> (1x)	–	82	136806	3.800
	8146/1093	1 x Phoenix UT 2-conductor, 2.5 mm <sup>2</sup> , grey	35 x 637 mm (1x)	18 x 4 mm <sup>2</sup> (2x)	104	–	136898	7.100
	8146/1093	1 x Phoenix UT 2-conductor, 2.5 mm <sup>2</sup> , grey	35 x 637 mm (2x)	18 x 4 mm <sup>2</sup> (2x)	196	–	136900	7.300
	8146/1093	1 x Phoenix UT 2-conductor, 4 mm <sup>2</sup> , grey	35 x 637 mm (1x)	18 x 4 mm <sup>2</sup> (2x)	–	86	136899	7.300

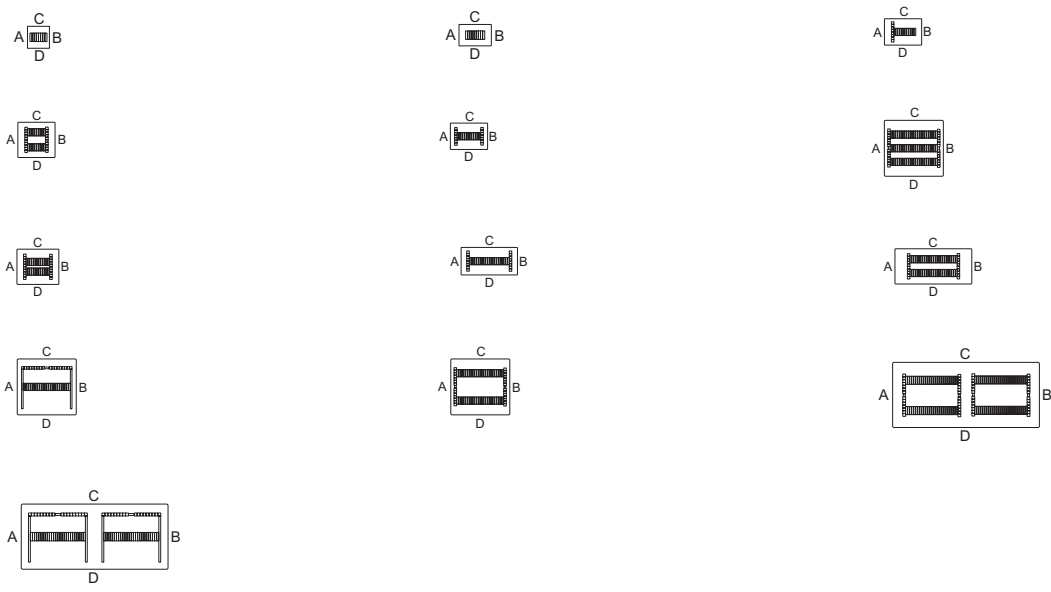
The enclosures are equipped with mounting rails, PE terminals and 1 terminal block of the specified type.  
2 connections can be established for each terminal on the PE rail.

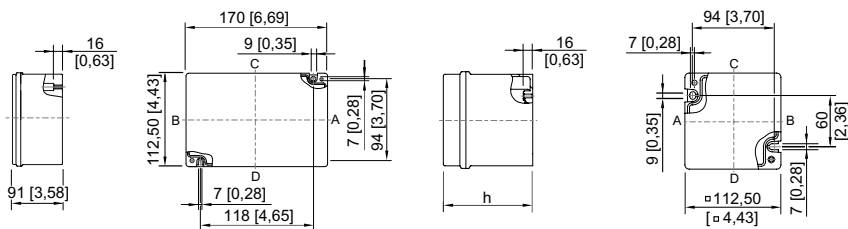
**Technical Data**
**Explosion Protection**

IECEX gas explosion protection	Ex eb IIC T6/T5/T4 Gb
IECEX dust explosion protection	Ex tb IIIC T80 °C ... T95 °C ... T130 °C Db

Technical Data	
Explosion Protection	
ATEX gas explosion protection	II 2 G Ex eb IIC T6/T5/T4 Gb
ATEX dust explosion protection	II 2 D Ex tb IIIC T80 °C ... T95 °C ... T130 °C Db
EAC gas explosion protection	1 Ex e d ia mb IIC T6...T3 Gb X
EAC dust explosion protection	Ex tb IIIC T80° ... T135°C DbX
Certificates	ATEX (PTB), Brazil (ULB), Canada / USA (UL), China (NEPSI), EAC (LPE), IECEX (PTB), India (PESO), Korea (KGS), Taiwan (ITRI), USA (UL)
Notes	CCC certificate available from 2021 onward
Ship approval	BVIS
Notes	Product label may vary. Series devices have certification according to ATEX and IECEX.
Electrical Data	
Rated operational voltage AC	690 V
Notes	Rated operational voltage max. 1100 V AC/DC (depending on terminal types and explosion-protected components used)
Mechanical Data	
Degree of protection IP (IEC 60529)	IP66
Enclosure material	Polyester resin, Glass fibre reinforced
Silicone-free	No
Components	
Notes	Please observe the information of the terminal manufacturer, e.g. the tightening torque

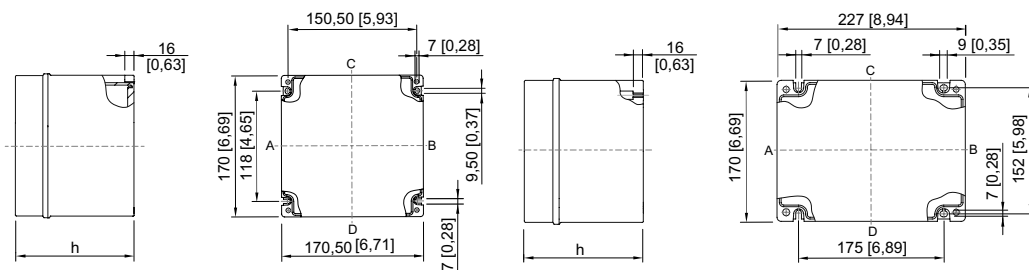
### Technical Drawings – Subject to Alterations





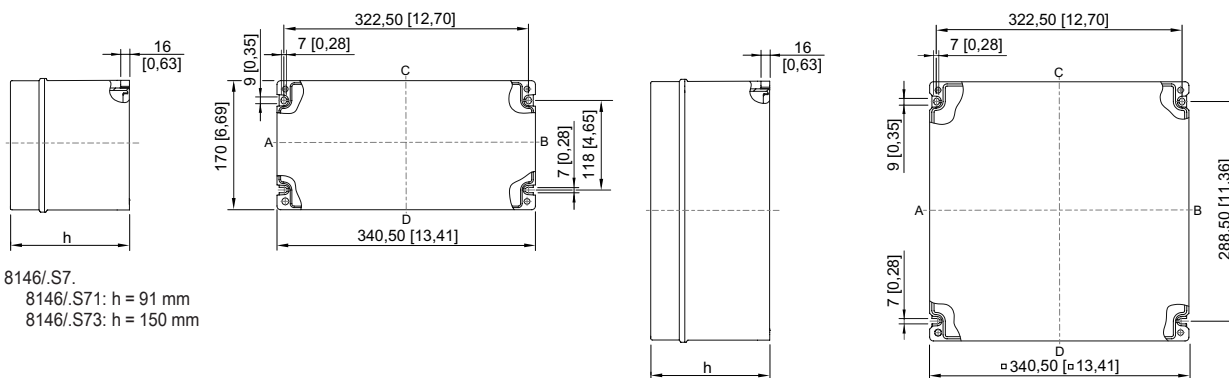
8146/04.

8146/03.  
8146/031: h = 91 mm  
8146/037: h = 104 mm



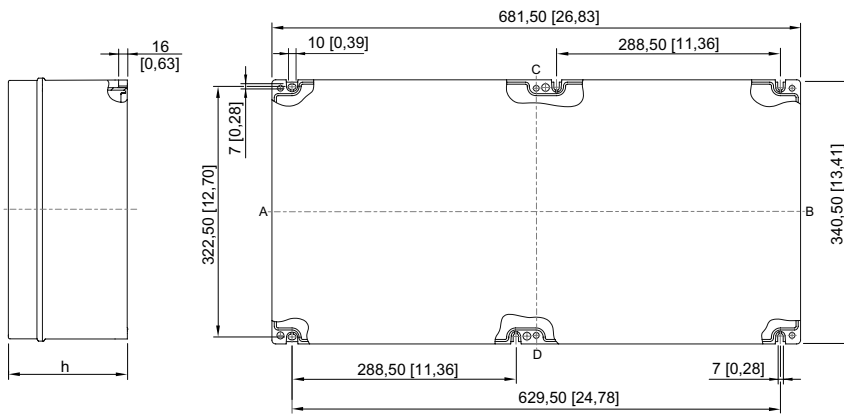
8146/05.  
8146/051: h = 91 mm  
8146/052: h = 131 mm

8146/06.  
8146/061: h = 91 mm  
8146/062: h = 131 mm



8146/S7.  
8146/S71: h = 91 mm  
8146/S73: h = 150 mm

8146/08.  
8146/081: h = 91 mm  
8146/082: h = 131 mm  
8146/083: h = 150 mm  
8146/084: h = 171 mm  
8146/085: h = 190 mm  
8146/086: h = 230 mm



- 8146/.09.  
 8146/.091: h = 91 mm  
 8146/.092: h = 131 mm  
 8146/.093: h = 150 mm  
 8146/.095: h = 190 mm