



- Flexible configuration due to pushbutton, mushroom pushbutton, mushroom stay-put button, mushroom stay-put button with key lock, key-operated button, key-operated switch
- Easy assembly thanks to single-hole mounting (D 30)
- Codable "latching", "spring return", "key not removable" functions
- Plug-in connection with 6 m connection line

E4

WebCode 8003D









R. STAHL Series 8003 control buttons and/or switches for panel mounting switch load, control and signal circuits up to 6 A. Depending on the type, they are complete or incomplete explosion-protected equipment with corresponding requirements for installation. As an option, various actuators are available.

	IECEX / ATEX						
	Zone	0	1	2	20	21	22
Installation in		•	•		•	•	

	NEC 500 CEC Appendix J						
	Division	Class I		Class II		Class III	
		1	2	1	2	1	2
Installation in		•		•			

	CEC Section 18 NEC® 505						NEC® 506		
	Zone	Class I			20	21	22		
		0	1	2					
Installation in		•	•						


Selection Table							
Actuator		Key-operated switch actuator					With key-operated switch actuator
Number of switching positions		2					
Figure	Number of NCs	Number of NOs		Product Type	Art. No.	Weight kg	
	1	1		8003/113-008-2-r-MS1-6	218604	0.125	
	2	-		8003/123-008-2-r-MS1-6	218605	0.125	
Actuator		Key-operated switch actuator					With key-operated switch actuator
Number of switching positions		3					
Figure	Number of NCs	Number of NOs		Product Type	Art. No.	Weight kg	
	-	2		8003/133-008-3-rr-MS1-6	213542	0.125	
Actuator		Mushroom stay-put button EM-STOP					
Figure	Number of NCs	Number of NOs		Product Type	Art. No.	Weight kg	
	1	1		8003/113-010S-6	217964	0.125	
	2	-		8003/123-010S-6	217965	0.125	

Selection Table					
Actuator		Pushbutton			
Figure	Number of NCs	Number of NOs	Product Type	Art. No.	Weight kg
	1	1	8003/113-001-6	213516	0.125
	-	2	8003/133-001-6	213540	0.125
Actuator		Rotary actuator, small Not padlockable			
Number of switching positions		2			
Figure	Number of NCs	Number of NOs	Product Type	Art. No.	Weight kg
	1	1	8003/113-726-2-r-6	213524	0.125
	Actuator		Rotary actuator, small Not padlockable		
Number of switching positions		3			
Figure	Number of NCs	Number of NOs	Product Type	Art. No.	Weight kg
	1	1	8003/143-726-3-tt-6	213556	0.125
	-	2	8003/133-726-3-tt-6	213546	0.125






- yellow label for EM-STOP function is enclosed
- plates must be ordered separately; see accessories
- key-operated switch with "spring-return" and/or "key not removable" on request
- versions with other locking cylinders on request
- key switches type 8003/1...008- and control switches type 8003/1...726-3 are codable ("latching", "spring-return", "key removable")

Technical Data	
Explosion Protection	
IECEX gas explosion protection	Ex db eb IIC T6 Gb
IECEX dust explosion protection	Ex tb IIIC T80 °C Db
ATEX gas explosion protection	Ⓜ II 2 G Ex db eb IIC T6 Gb
ATEX dust explosion protection	Ⓜ II 2 D Ex tb IIIC T80 °C Db
Notes	CCC certificate available from 2021 onward
Notes	Product label may vary. Series devices have certification according to ATEX and IECEx.
Electrical Data	
Rated operational voltage AC	500 V
Ambient Conditions	
Ambient temperature	-20 °C ... +60 °C
Mechanical Data	
Enclosure protection type (IP) front	IP66
Enclosure protection type (IP) rear	IP65
Contact material	Silver-nickel
Silicone-free	Yes
Conductor length	6 m
Type of connection cable	ÖLFLEX 4x1 mm ²
Components	
Cable entries	1 x M16 x 1.5
Entry type	Standard 8161, moulded material

Accessories

Figure	Description	Art. No.	Weight kg
Spare key			
	Closing MS1	107109 ▲	0.008

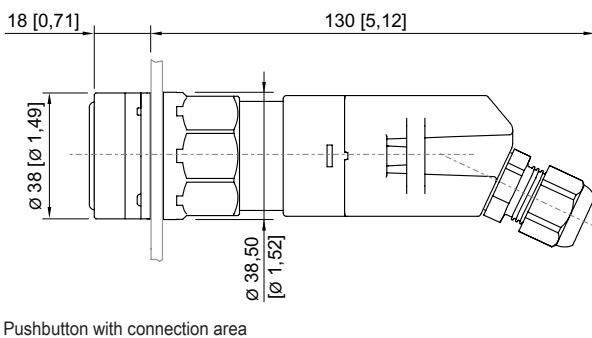
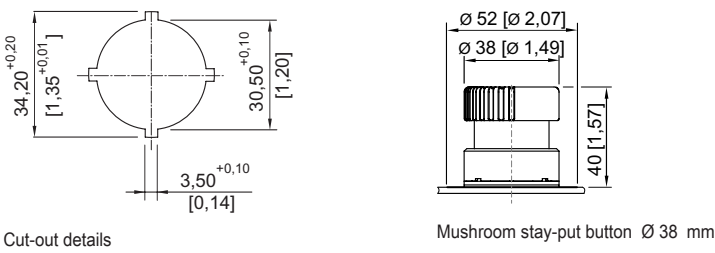
Spare Parts

Figure	Description	Art. No.	Weight kg
Symbol label for pushbutton and selector switch			
	Colour: blue Blank label without text	155911 ▲	0.001
	Colour: yellow Blank label without text	155914 ▲	0.001
	Colour: red Blank label without text	155897 ▲	0.001
	Colour: green Blank label without text	155901 ▲	0.001
	Colour: white Blank label without text	155908 ▲	0.001
	Colour: black Blank label without text	155905 ▲	0.001
	Colour: black Text: I	155846	0.001
	Colour: green Text: I	155689 ▲	0.001
	Colour: white Text: I	155892	0.001

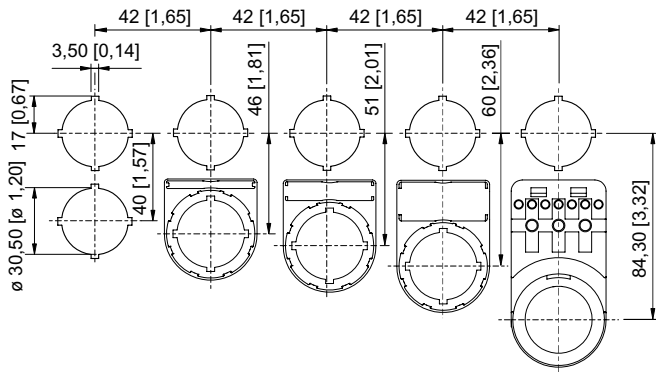
Spare Parts			
Figure	Description	Art. No.	Weight kg
Symbol label for pushbutton and selector switch			
	Colour: black Text: II	155854	0.001
	Colour: green Text: II	155706	0.001
	Colour: red Text: O	155596 ▲	0.001
	Colour: black Text: O	155783	0.001
	Colour: black Text: I O	155771 ▲	0.001
	Colour: black Symbol: Arrow	155761	0.001
	Colour: black Text: EIN	155862	0.001
	Colour: red Text: OFF	155654	0.001
	Colour: red Text: Aus	155634	0.001
	Colour: black Text: Aus	155806	0.001
	Colour: red Text: STOP	155615 ▲	0.001
	Colour: black Text: STOP	155795	0.001

Spare Parts			
Figure	Description	Art. No.	Weight kg
Symbol label for pushbutton and selector switch			
	Colour: blue Text: RESET	155894	0.001
	Colour: green Text: ON	155671	0.001
Label mount			
	Label mount, size 1, without symbol label Text: 1 line for actuators to fit Ø 30.5 mm holes	155632	0.001
	Label mount, size 2, without symbol label Text: 1 or 2 lines for actuators to fit Ø 30.5 mm holes	155687	0.002
	Label mount, size 3, without symbol label Text: 1, 2 or 3 lines for actuators to fit Ø 30.5 mm holes	155844	0.002
Closure part			
	for closing of unused mounting holes Ø 30.5 mm	155329	0.016

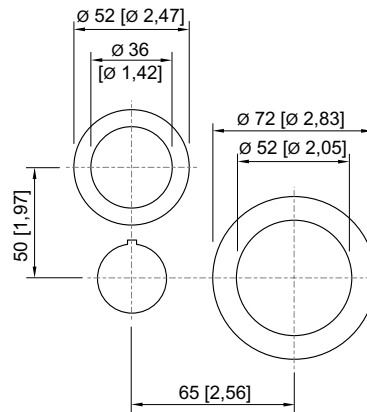
Dimensional Drawings (All Dimensions in mm [inches]) – Subject to Alterations



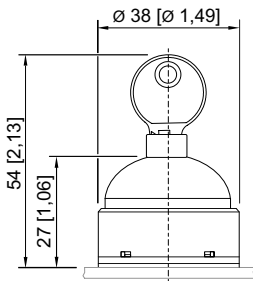
E4



Standard cut-out with / without front label



Standard cut-out for EMERGENCY-STOP button



Key switch